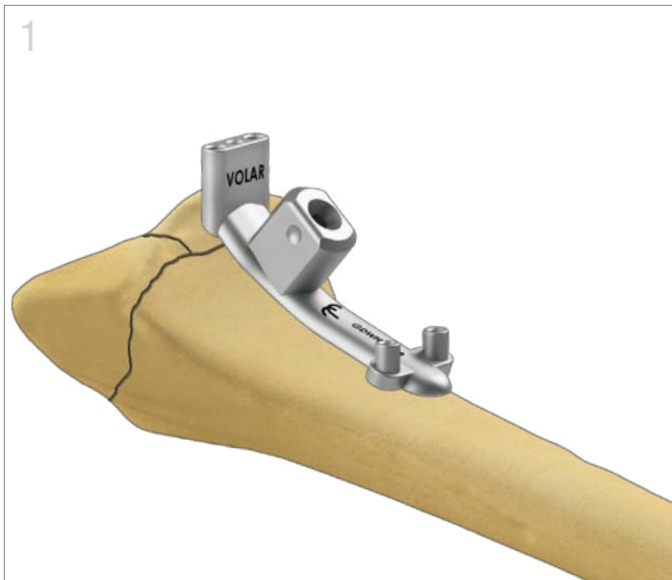




Volar Hook Plate™

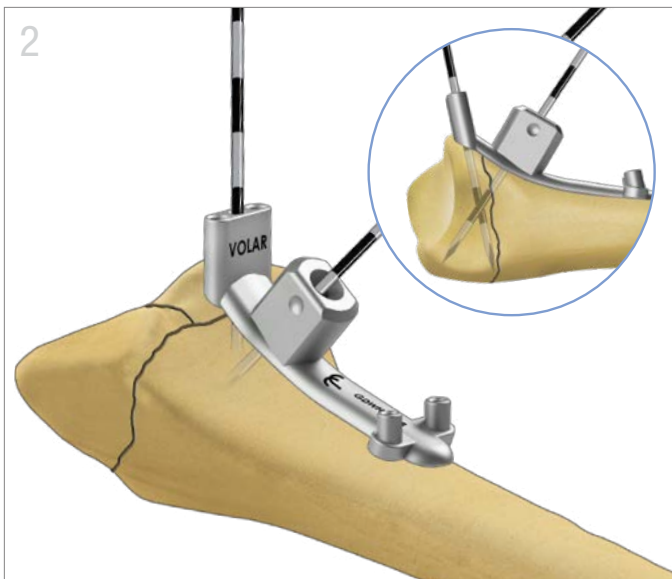
Surgical Technique | *TriMed Wrist Fixation System*





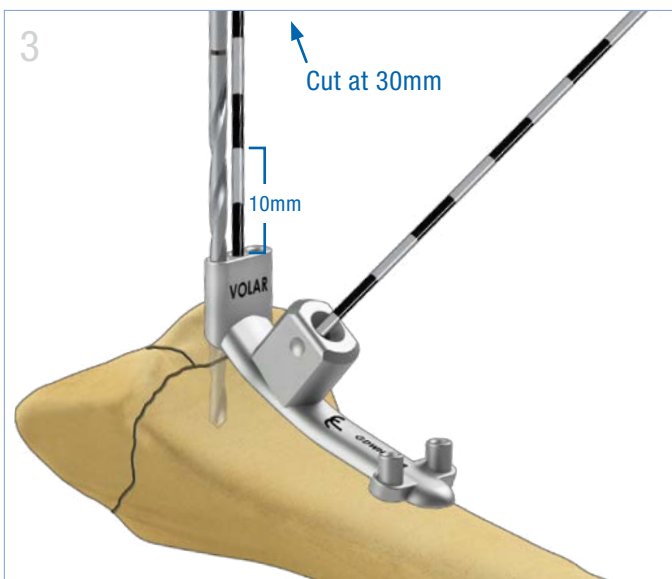
Exposure and Reduction

- Reflect the pronator quadratus and expose distally up to 1-2mm beyond the distal radial ridge.
- Reduce the fracture and temporarily fix with K-wires as needed.
- Apply the Volar Drill Guide in the desired position. (see note 1)



Stabilize Guide and Check Position

- Insert a 1.1mm (0.045") K-wire through the central distal hole of the guide to verify hook positions.
- Insert a second K-wire through the center block to verify position of the locking peg. (see note 2)
- Confirm the K-wire positions with a 10° lateral X-ray.

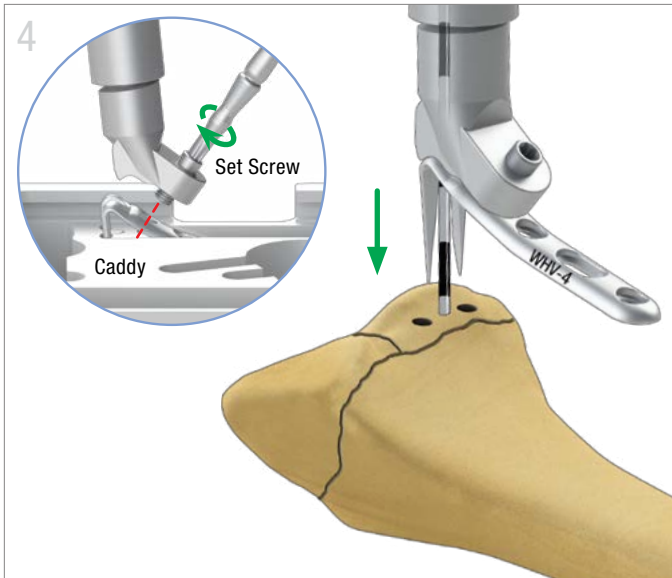


Drill Distal Holes

- Cut the distal K-wire about 30mm (3 sets of stripes) above the guide.
- Drill the two outer holes at the distal end of the guide with a 1.8mm (blue) drill.
- Remove the K-wire from the center block of the guide and slide the guide off the distal K-wire.

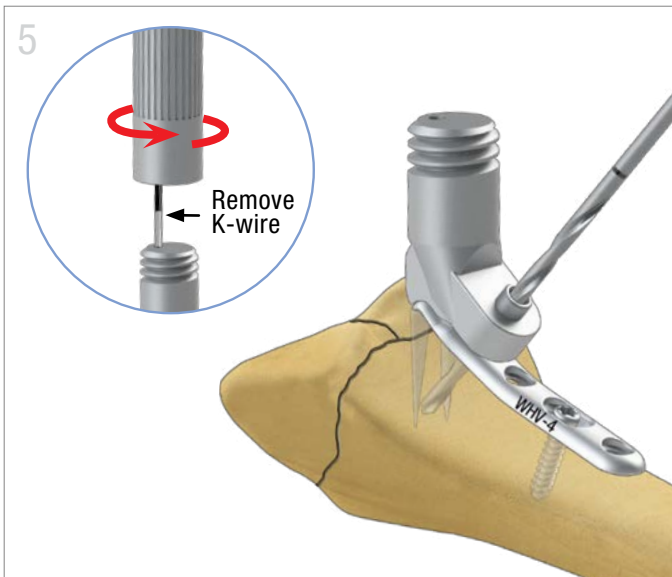
Notes:

1. The Extender Guide can be used as a handle for the drill guide.
2. A K-wire inserted into a proximal hole of the guide can be used to help guide the edge of the implant into position proximally.



Insert Volar Hook Plate™

- Using the assembly slot in the caddy, secure the impactor onto the plate with the set screw.
- Engage the cannula of the impactor over the distal guide wire and guide the hooks into the drilled holes.
- Seat implant to bone.



Drill Locking Peg

- Secure the plate proximally with a 2.3mm screw in the proximal slotted hole.
- Unscrew the impactor handle and remove the distal K-wire.
- Drill a hole for the distal subchondral (**locking peg**) through the center of the cannulated set screw.
- Disengage the set screw from the plate to remove the impactor, measure and insert the subchondral locking peg.



Complete Fixation

- Complete proximal fixation with 2.3mm cortical screws.
- Apply additional plates as needed.

All implants made from surgical grade stainless steel

Volar Hook Plate™

WHV-4
WHV-6



Volar Drill Guide

GDWHV-1.8

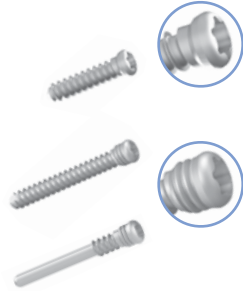


Screw and Pegs

TRX2.3-xx
10mm to 32mm

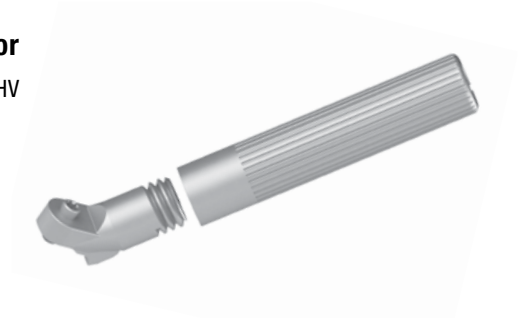
TPEG-xx
14mm to 32mm

UPEG-xx
14mm to 28mm



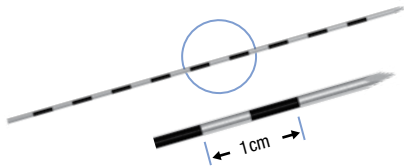
Impactor

IMPCT-WHV



K-Wire

WIRE-1.1/100



Extender Guide

XTNDRGUIDE



X-RAYS



Pre-Op AP



Pre-Op Lateral



Post-Op AP



Post-Op Lateral

X-Rays courtesy of Ed Rowland, MD



TriMed, Inc. / 27533 Avenue Hopkins / Santa Clarita, CA 91355 USA / 800-633-7221 / www.trimedortho.com

The technique presented is one suggested surgical technique. The decision to use a specific implant and the surgical technique must be based on sound medical judgment by the surgeon that takes into consideration factors such as the circumstances and configuration of the injury.

This document is controlled by TriMed, Inc. When downloaded, printed, and/or copied, this document becomes uncontrolled, and users should always check trimedortho.com for the latest version.

For indications, contraindications, warnings and precautions related to TriMed Wrist Fixation System reference IFU on trimedortho.com/ifu.

See trimedortho.com/patents for all patent information.

CE
1639